

# Installation Guide

## Mounting Temperature Sensors Separately Vaisala Mobile Detector MD30

### Mounting temperature sensors separately



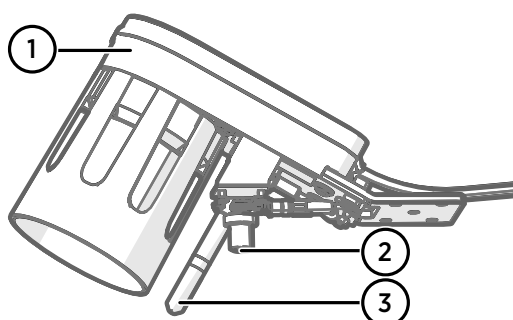
- Extension set MD30EXTSET
- Torx screwdriver TX 20

#### Extension set contents:

|                          |  |
|--------------------------|--|
| Magnet (2 pcs)           | For attaching temperature sensor to vehicle                                  |
| Mounting bracket (2 pcs) | Angle bracket for sensor   |
| HMP holder               | For air temperature and humidity sensor HMP113 (not needed in MT10 mounting) |
| Cable, 5 m (16 ft 4 in)  | For connection between MD30 sensor body and HMP113                           |
| Cable, 3 m (9 ft 10 in)  | For connection between MD30 sensor body and either MT10 or HMP113            |
| Sealing tube (4 pcs)     | For cable ends   |
| Screws (8 pcs)           | Sockethead Torx screw M4×8   |
| Screws (4 pcs)           | Countersunk Torx screw M4×8  |

Install one of the temperature sensors or both separately. Recommendations for optimal performance:

- HMP113: mount to a location with good air flow and away from heat sources such as car engine.
- MT10: mount under the vehicle and away from heat sources, reflections from sky, and sunlight.



- 1 Surface state sensor
- 2 Surface temperature sensor MT10
- 3 Air temperature and humidity sensor HMP113



**WARNING!** Disconnect power from the sensor before you start.

1. Loosen the 4 screws that hold the temperature sensor in place and remove the sensor, pull the air temperature and humidity sensor (HMP) through the holder, and disconnect the sensor cable.
2. Assemble as shown in the following figures.  
Use the provided screws. Use the sealing tubes at both ends of the cable.  
For the air temperature and humidity sensor HMP, put the existing holder back to MD30 to protect the cable connection.
3. Select a place for the sensor, for example under the vehicle or under the side mirror of the vehicle.
4. Attach the cable with cable ties to the vehicle.



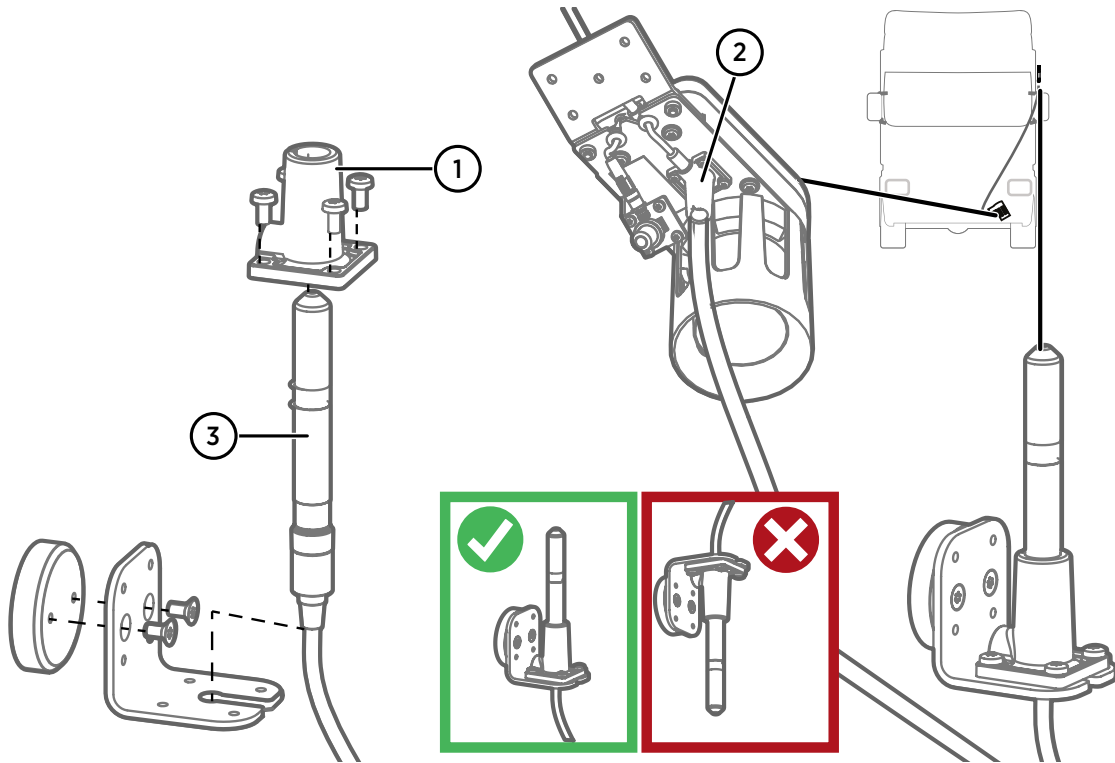


Figure 1 Mounting air temperature and humidity sensor HMP113 with magnet

- 1 HMP holder, new
- 2 HMP holder, existing
- 3 Air temperature and humidity sensor (must face up to avoid water, snow, and ice buildup on sensor)

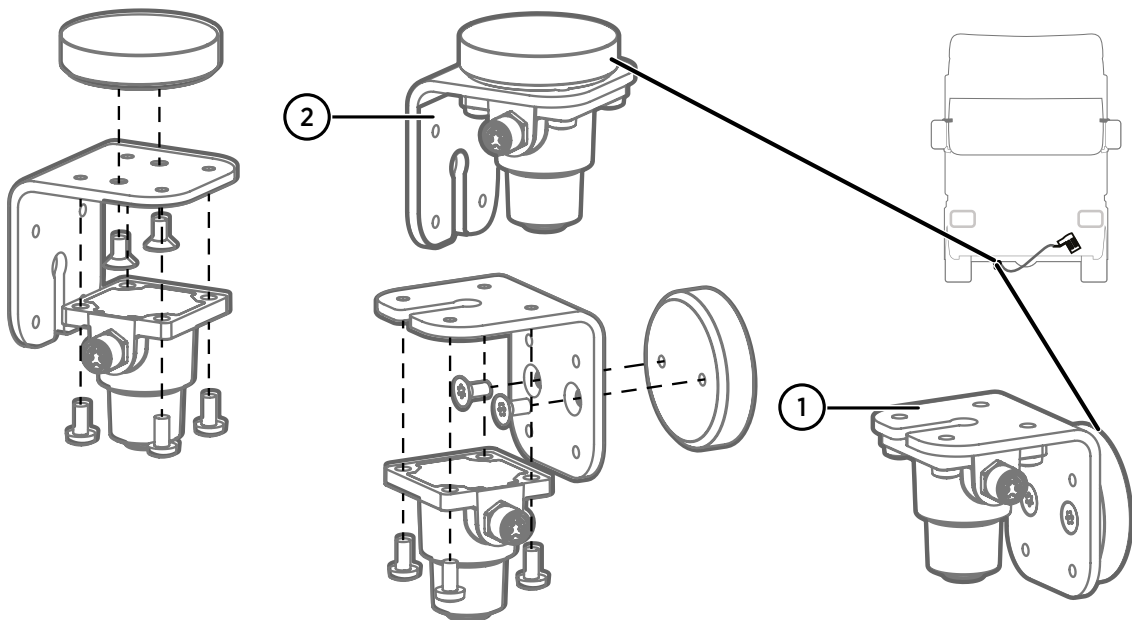


Figure 2 Mounting surface temperature sensor MT10 with magnet

- 1 Mounting on vertical surface, for example front or side of vehicle
- 2 Mounting on horizontal surface, for example front of car



To avoid signal loss, the maximum cable length for MT10 is 3 m (9 ft 10 in).