

# VAISALA



## Port operations

Operate safely during warehousing and equipment loading

## FROM PORT TO SEA 5 ways advanced weather sensing leads to better offshore wind farm builds

As the wind energy industry expands offshore, operational decisions depend on critical weather insights. Lightning and high winds and waves risk safety and efficiency. Delays and repairs can easily cost millions.

Accurate and reliable weather insight is the key to safer, more efficient offshore wind farm builds, from construction to maintenance.

Here are the top 5 ways advanced weather sensing can help

- Increase crew safety
- Maximize operational uptime
- Lower the total cost of offshore wind energy
- Secure asset safety in all build and maintenance phases



## Vessel transport

Transport equipment without expensive weather-induced delays



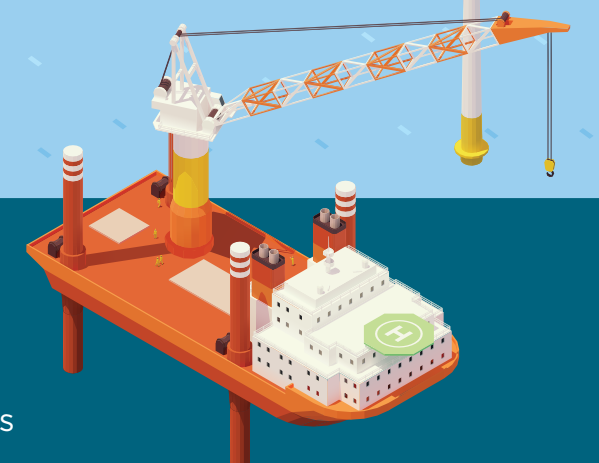
## Docking a vessel

Avoid accidents by knowing the right time to dock



## Crane operations

Keep crew safe and assets secure when dangerous weather approaches



## Helideck operations

Prevent delays and safety risks by avoiding dangerous weather conditions



### WindCube®

A compact, lightweight, plug-and-play wind lidar. It is the wind energy industry's reference to profile the wind in real-time up to 300m. WindCube provides critical wind data aloft to validate weather forecast accuracy and secure crane operations.

- Accurate, near-real-time wind measurements to detect hazardous wind gusts
- Highly accurate, rigorously validated data
- Reliable and easy to deploy for Wind Turbine Installation Vessels (WTIV)
- Suitable for demanding offshore deployments

### Helideck Monitoring System

Provides accurate data 24/7 on prevailing weather, sea state and helideck motion. Ensures effective flight planning and safe landings on offshore WTIV helidecks and substations.

- Monitors wind, visibility, barometric pressure, cloud height, temperature, humidity and wave height
- Lightning data available for safer helicopter route planning
- Proven accuracy and reliability in all weather conditions
- Complete data collection, display, storage and reporting

### Thunderstorm Manager + Global Lightning Network

A lightning threat management system designed to increase certainty and maximize safety. Built on our global lightning detection network GLD360 which accurately detects lightning 24/7, everywhere in the world.

- Detects all thunderstorms globally in real time — even over the North Pole
- Provides tracking and nowcasting of thunderstorm movements
- Includes fast, secure data communications without a local lightning sensor
- Provides alert and all clear notifications

# VAISALA

Learn more about the about the technology that gives you the power of complete weather awareness.

[vaisala.com/offshoreweather](https://vaisala.com/offshoreweather)

