



Features

- Generic data panel display for aviation purposes
- Easy-to-use touch screen with intuitive graphical user interface
- High contrast day-time and night-time color schemes with display brightness control
- Coherent look and feel with Vaisala AviMet® systems
- Visual and audible alarms
- Desktop, panel, and wall mounting options
- Short installation times and virtually maintenance free
- Robust electrical and mechanical design

Vaisala AviMet® Data Panel Display WID512 is designed for viewing important information in aviation applications in a simple way.

WID512 uses a compact 5.7-inch LCD screen suitable for aviation-related operating environments such as air traffic control towers, where excellent readability in both bright and dim light is required. The display is controlled using an easy-to-use resistive touch screen, with a clear, uncluttered user interface for simple operation.

Robust display with high performance

WID512 is robust, designed and tested for demanding industrial electromagnetic and environmental specifications. It is equipped with a resistive touch screen that can be controlled with either bare or gloved hands, or any other suitable object.

The display can be mounted in different ways depending on where it is installed. It can be easily mounted on a standard IEC panel, desktop, or wall.

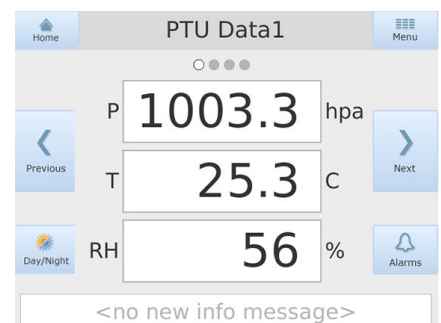
Integrated touch screen for efficient operations

WID512 has a full-size intuitive touch screen with a graphical user interface for easy navigation between separate data pages – as well as simple display setting changes with straightforward item selection. Each data page contains 3 data rows with 3 columns. Typically one data label, one value, and one unit are shown on each row.

The display supports up to 16 pages of information. Data shown on it is controlled by the host computer with a message format defining the content of each displayed page.

WID512 can be used for different data viewing purposes, most commonly it is used as a back-up display for the AWOS system main user displays. The display is connected to the data sending unit, like the AWOS, via Ethernet or RS-485 connection.

There are visual and audible alarms in all views to warn of serious events, such as message or system failures. To prevent unauthorized changes to the display settings, a PIN code is required to access advanced settings in the maintenance mode.



Technical data

Operating environment

Operating temperature	0 ... +40 °C (+32 ... +104 °F)
Storage temperature	-20 ... +80 °C (-4 ... +176 °F)
Operating humidity	2 ... 95 %RH, non-condensing
IP rating	IP20
Flammability class	UL94 V-0

Inputs and outputs

Supply voltage	12 ... 28 VDC
Maximum power consumption at +20 °C (+68 °F)	15 W
Typical power consumption at +20 °C (+68 °F)	4 W
Data interfaces	Ethernet (10/100 MBit/s), RS-422, RS-485, RS-232

User interface

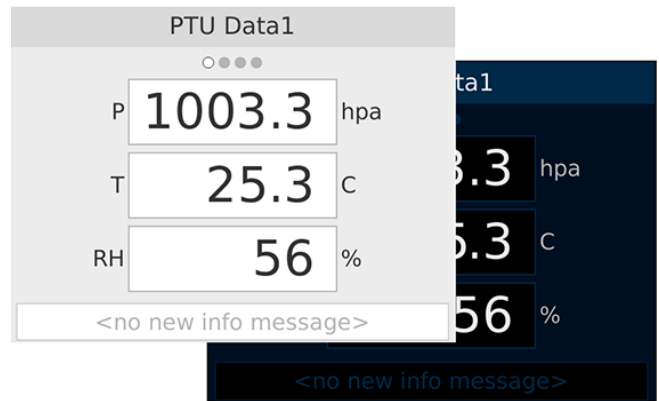
Display	5.7-inch TFT LCD, 640 × 480 VGA resolution, > 500 cd/m ² luminance
Brightness control	Manual
User input interface	Touch screen
Audible alarm	> 80 dB(A) at 1 m (3 ft 3 in), 2 kHz
Observation mode	Up to 16 data pages with a header text box and 9 alphanumeric text boxes
Navigation mode	Switch between data pages Alarm log Day-time and night-time views Access to maintenance mode
Maintenance mode	Display cleaning (wipe) mode Touch screen calibration Volume setting Brightness setting Product information view Advanced settings (PIN login) Configuration settings Configuration file import/export Software update

Compliance

Directives	EMC, LV, RoHS
Compliance marks	CE, UKCA, RCM
Drop test compatibility	MIL-STD-810G 516.6 Procedure IV, Free Fall (Rough Handling)
Vibration compatibility	MIL-STD-810G 514.6C-3 Procedure I, Cargo Vibration Test
EMC compatibility	IEC/EN/BS 61326-1, industrial environment
EMC emissions	CISPR 32 / EN/BS 55032, Class B

Mechanical specifications

Housing material	PC/ABS
Mounting options	Panel, desktop, wall
Panel installation standard compatibility	IEC 61554
Panel mounting aperture dimensions	138 × 138 mm (5.43 × 5.43 in)
Panel mounting frame dimensions	144 × 144 mm (5.67 × 5.67 in)



WID512 day-time and night-time color schemes